


Pathways

The new PATH for old & NEW Toastmasters

Login to www.toastmasters.org/login



WHERE LEADERS ARE MADE

 | [Login](#) | [Find a Club](#) | [Start a Club](#) | [Contact Us](#)

Search



FIND A CLUB

[About](#) | [Pathways](#) | [Education](#) | [Membership](#) | [Leadership Central](#) | [Resources](#) | [Magazine](#) | [Events](#) | [Shop](#)

[Home](#) / [Login](#)

Log In

Username *

reefent@cox.net

Password *

••••••••

Log In

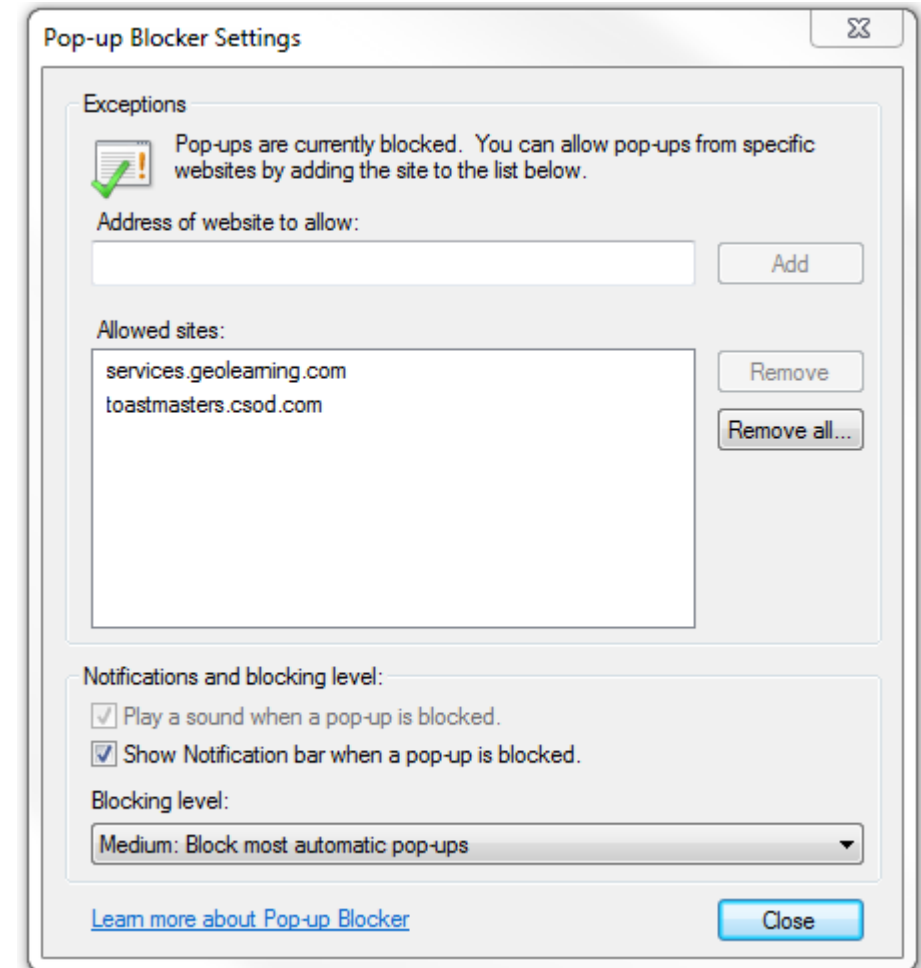
[Forgot password?](#)

Toastmasters members logging in for the first time please use "Forgot password?"

Feedback

Disable Pop-up Blocker

- Allow Pop-ups from Toastmaster
- Open Tools (from browser)
- Add toastmasters.csod.com
- Close Pop-up Blocker settings



Pathways Learning Experience

I PATHWAYS LEARNING EXPERIENCE

Welcome to Pathways! You'll be challenged and inspired to reach new heights both personally and professionally.

Choose your path

What are your goals and how will you achieve them? Take the Pathways Assessment to identify the path that best aligns with your interests and objectives.

Club officers: you can order a path for yourself or a path in printed materials for your members.

Yourself

Another Member

Continue to Path Selection

Access my path through Base Camp

Access your path here through Base Camp, your online gateway to Pathways. Base Camp tracks your progress and lets you connect online with other members of your club.

Select your club:

Irvine Project Masters



Log in as a Member

The Navigator

View *The Navigator* to guide you through each step of your journey. Refer to it to support your progress and to answer your questions along the way.

THE NAVIGATOR

Launch *The Navigator*

Choose your Path

Recommended

Base Camp

First path free

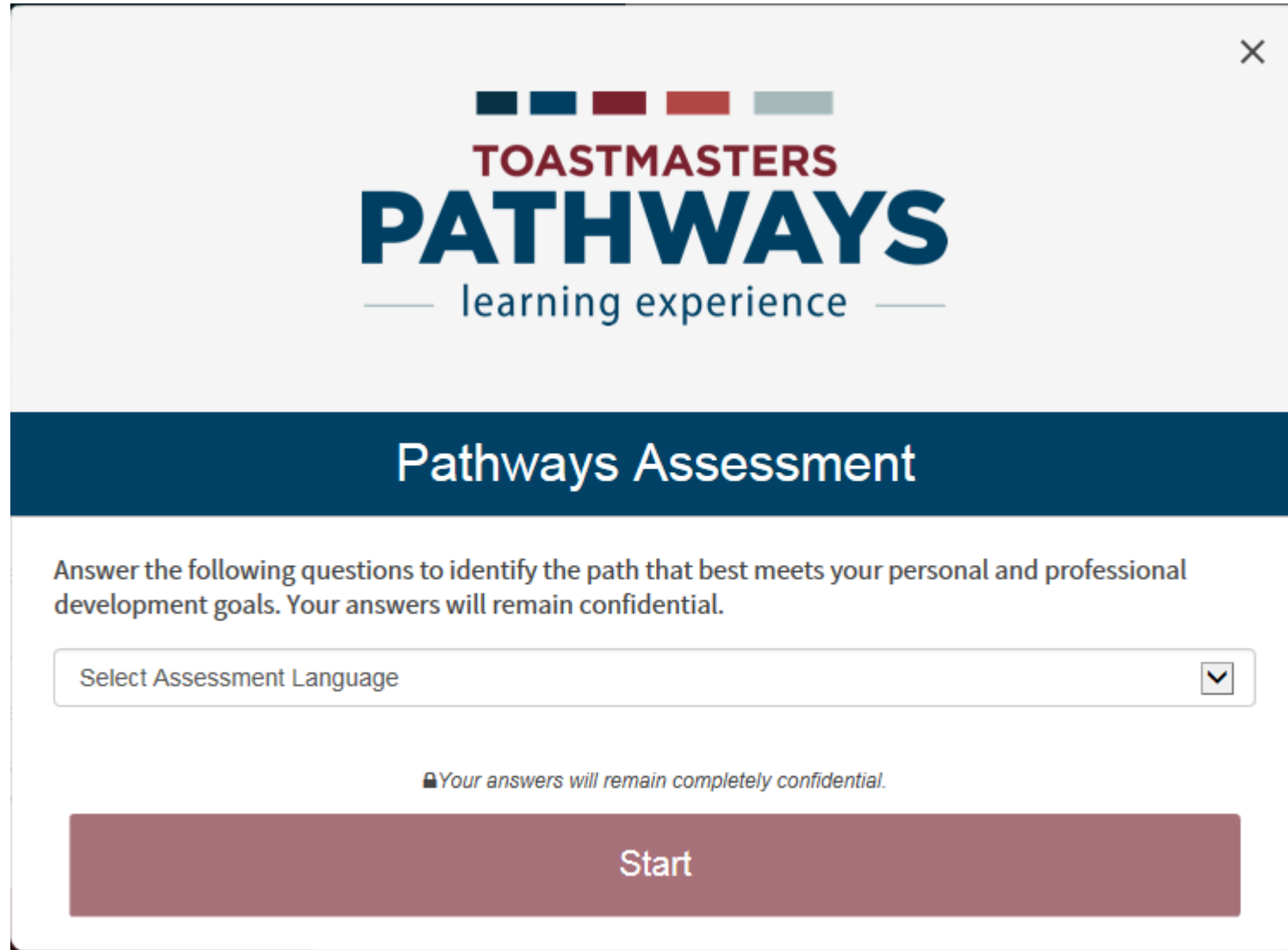
Base Camp is your online gateway to Pathways. Embarking on your Pathways journey through Base Camp is recommended because it offers full access to the Pathways learning experience and includes:

- ▶ 10 paths in English and eight other languages*
- ▶ Customized path recommendation based on your Pathways Assessment results
- ▶ Engaging videos, interactive activities and quizzes
- ▶ A unique evaluation resource for each project that can be completed and stored electronically
- ▶ Opportunity to earn and give digital badges
- ▶ Ability to share feedback online

*If you plan to work in a path in any language other than English, it is highly recommended that you use Base Camp. This way, you can choose from all 10 paths as opposed to two.

[Take Your Assessment](#)

Take Your Assessment (Took 4.5 minutes)



The screenshot shows a web interface for the Toastmasters Pathways Assessment. At the top, there is a logo consisting of five colored squares (dark blue, blue, red, dark red, light blue) above the text "TOASTMASTERS" in red and "PATHWAYS" in large blue letters. Below this is the tagline "learning experience" in a smaller blue font, flanked by two horizontal lines. A dark blue horizontal bar contains the text "Pathways Assessment" in white. Below this bar, there is a paragraph of text: "Answer the following questions to identify the path that best meets your personal and professional development goals. Your answers will remain confidential." Below the text is a dropdown menu with the text "Select Assessment Language" and a downward arrow icon. Below the dropdown menu is a small lock icon followed by the text "Your answers will remain completely confidential." At the bottom of the interface is a large, dark red button with the text "Start" in white.


×

TOASTMASTERS
PATHWAYS
— learning experience —

Pathways Assessment

Answer the following questions to identify the path that best meets your personal and professional development goals. Your answers will remain confidential.

Select Assessment Language

 Your answers will remain completely confidential.

Start

0% Complete



Select three topics you are interested in learning about from the list below.

- | | | | |
|-------------------------------------|------------------|--------------------------|-----------------------------|
| <input type="checkbox"/> | Public Speaking | <input type="checkbox"/> | Networking |
| <input checked="" type="checkbox"/> | Coaching | <input type="checkbox"/> | Change Management |
| <input type="checkbox"/> | Speech Writing | <input type="checkbox"/> | Time Management |
| <input checked="" type="checkbox"/> | Project Planning | <input type="checkbox"/> | Motivating Others |
| <input checked="" type="checkbox"/> | Leadership | <input type="checkbox"/> | Interpersonal Communication |
| <input type="checkbox"/> | Negotiation | | |

Next

At the End of the Assessment

RECOMMENDED PATHS

When you purchase a path in Pathways, a new shopping cart will be created. Any previous items in your shopping cart will be saved and restored once your Pathways purchase is complete.

Select a Language

English



Best Match



Effective Coaching

This path helps you build your skills as a positive communicator, leader and coach. You will work through projects that focus on understanding and building consensus, contributing to the development of others by coaching and establishing strong public speaking skills. Each project emphasizes the importance of effective interpersonal communication. The Effective Coaching path culminates in a "High Performance Leadership" project of your design. Not available in printed materials.

Choose this Path



Dynamic Leadership

This path helps you build your skills as a strategic leader and negotiator. You will work through projects that focus on understanding leadership and communication styles, the effect of conflict on a group and the skills needed to defuse and direct conflict. Each project also emphasizes the development of strategies to facilitate change in an organization or group, interpersonal communication and public speaking. The Dynamic Leadership path culminates in a project focused on applying your leadership skills. Not available in non-English printed materials.

Choose this Path




Persuasive Influence

This path helps you build your skills as a persuasive communicator and leader. You will work through projects that focus on how to negotiate a positive outcome while building strong interpersonal communication and public speaking skills. Each project emphasizes the development of leadership skills for complex situations and how to create innovative solutions to solve challenges. The Persuasive Influence path culminates in a "High Performance Leadership" project of your design. Not available in printed materials.

Choose this Path

Additional Paths

Additional Paths 

Innovative Planning

This path helps you build your skills as a public speaker, leader and project manager.
Not available in printed materials.

[Read More](#)

Leadership Development

This path helps you build your skills as an effective communicator and leader.

[Read More](#)

Motivational Strategies

This path helps you build your skills as a powerful and effective communicator.
Not available in printed materials.

[Read More](#)

Presentation Mastery

This path helps you build your skills as an accomplished public speaker.

[Read More](#)

Strategic Relationships

This path helps you build your skills as a leader in communication.
Not available in non-English printed materials.

[Read More](#)

Team Collaboration

This path helps you build your skills as a collaborative leader.
Not available in non-English printed materials.

[Read More](#)

Visionary Communication

This path helps you build your skills as a strategic communicator and leader.
Not available in printed materials.

[Read More](#)

You are on your Way!



Thank you for enrolling in Toastmasters Pathways

Your journey has officially begun! You will receive a confirmation email shortly and be able to start your path in approximately 30 minutes. If you have any questions, please contact supplyorders@toastmasters.org or call

+1 949-858-8255 , Monday through Friday, 6 a.m. to 7 p.m. PT.

[Return to Pathways Start Page](#)

[Explore Base Camp](#)

[System Requirements](#)

Pathways Learning Experience

I PATHWAYS LEARNING EXPERIENCE

Welcome to Pathways! You'll be challenged and inspired to reach new heights both personally and professionally.

Choose your path

What are your goals and how will you achieve them? Take the Pathways Assessment to identify the path that best aligns with your interests and objectives.

Club officers: you can order a path for yourself or a path in printed materials for your members.

Yourself

Another Member

Continue to Path Selection

Access my path through Base Camp

Access your path here through Base Camp, your online gateway to Pathways. Base Camp tracks your progress and lets you connect online with other members of your club.

Select your club:

Irvine Project Masters



Log in as a Member

The Navigator

View *The Navigator* to guide you through each step of your journey. Refer to it to support your progress and to answer your questions along the way.

THE NAVIGATOR

Launch *The Navigator*

To Basecamp

Toastmasters Pathways Online Agreement and Release

By clicking accept, I agree to the collection, use and processing of my personal information collected by Toastmasters International through the website, Toastmasters Pathways, and electronic communications. By accessing the Toastmasters website, Toastmasters Pathways, or my account I expressly agree that my information may be accessed, used, and shared by Toastmasters, its employees and agents, district officers, and club officers. I expressly agree that Toastmasters International, its employees and agents, district officers, and club officers may send me communications, emails, and messages and may contact me through electronic communications, emails, messages, phone calls, and mail.

I agree to refrain from any form of discrimination, harassment, bullying, derogatory, illegal, or unethical conduct, and I understand that if I engage in such conduct, I agree to reimburse Toastmasters International, my club or other clubs, or other individuals involved with Toastmasters, for any damages, losses or costs resulting from my conduct. I release and discharge Toastmasters International, its clubs, governing bodies, officers, employees, agents, and representatives from any liability for the intentional or negligent acts or omissions of any member or officer of my club or other clubs, or any officer of Toastmasters International.

Accept

Welcome to Base Camp



WELCOME TO BASE CAMP

Base Camp is your gateway to the Toastmasters Pathways learning experience. Base Camp is where you access your educational materials, your education transcript, interactive projects and other useful tips, tools and resources. If you are new to Base Camp, select the blue Navigating Base Camp tile to learn more.

My Education Transcript	
	Action
Effective Coaching	Open Curriculum
The Navigator	Launch

Suggested Education
No suggested training

Open Curriculum in Base Camp


The screenshot displays the 'Effective Coaching' curriculum page. On the left, a sidebar shows a 'CURRICULUM PROGRESS' section with a large '0%' indicator and a list of five levels. The main content area is titled 'Effective Coaching' and includes an 'Options' dropdown. Below the title is a descriptive paragraph. The main content is organized into five level cards, each showing a 0% completion status, the number of items completed, the minimum required items, and the total items available. Each card has a 'View Details' button.


Level	Completed	Min Required	Total Items	Action
Level 1	0	4	4	View Details
Level 2	0	4	4	View Details
Level 3	0	3	3	View Details
Level 4	0	3	3	View Details
Level 5	0	4	4	View Details


Level 1 (Effective Coaching)


Effective Coaching Options ▾

Level 1 ⁱ
0% Completed: 0 Min Required: 4 Total Items: 4

**Ice Breaker**
Status: Not Activated **Due:** No Due Date
This foundational project is designed to introduce you to your club and the skills you need to begin your Toastmasters journey. Activate ▾

**Evaluation and Feedback**
Status: Pending Prior Training **Due:** No Due Date
This project addresses the skills needed to give and receive feedback. You will learn about giving, receiving and applying feedback.

**Researching and Presenting**
Status: Pending Prior Training **Due:** No Due Date
This project addresses strategies for selecting a topic, suggestions for research and methods for producing a well-organized speech.

**Level 1 Completion—Effective Coaching**
Status: Pending Prior Training **Due:** No Due Date
Use this resource to help you through the process of requesting that your vice president education approve your completion of Effective Coaching Level 1.

Now you KNOW as Much as I DO.

- DON'T be afraid to explore
- If you get stuck:
 - Close down your present session
 - Reopen the Toastmasters site (you will probably still be connected)
 - Log-in, if you are not connected
 - Get back on the Path
- Enjoy the new path you are on.

Launch

TOASTMASTERS
INTERNATIONAL

THE

NAVIGATOR

Congratulations! You are officially a member of Toastmasters International. You have joined an organization that for decades has helped people across the world conquer their fears, improve their communication and leadership skills and build their confidence. You are now part of a global community of members working to reach their personal and professional goals.

Each day, thousands of people go to Toastmasters meetings held in communities and organizations around the globe. A club meeting isn't structured like a classroom with an instructor. Instead, it's a supportive group environment where people with diverse skill sets and backgrounds come together to practice their skills and exchange valuable feedback with each other.

CONTINUE

Get to know Base Camp

Get to know Base Camp

View the following tutorials to familiarize yourself with Base Camp and Pathways:

